

# Actioning Ockenden:

## 7 Immediate & Essential Safety Actions

This summary outlines the findings of the preliminary report from the independent maternity review of Shrewsbury and Telford NHS Trust.

**We at Frimley Health are proud to be taking the steps to meet these recommendations.**

### Enhanced Safety

"Safety in maternity units across England must be strengthened by increasing partnerships between Trusts and within local networks."

#### Our plan locally

We are working with our Local Maternity and Neonatal System, our neighbouring systems and our external partners to review incidents, share learning and receive feedback on a regular basis.



### Listening to Women & Families

"Maternity services must ensure that women and their families are listened to with their voices heard."

#### Our plan locally

Our Maternity Voices Partnership continue to gather feedback from a diverse range of women and families. This shapes many of our new and existing services. We have a non-executive director with oversight of our service.



### Staff Training & Working Together

"Staff who work together must train together."

#### Our plan locally

We are continuing with our mandatory multidisciplinary training for clinical staff. We also hold regular training on fetal monitoring and clinical skills & drills.



### Risk Assessment Throughout Pregnancy

"Staff must ensure that women undergo a risk assessment at each contact throughout the pregnancy pathway."

#### Our plan locally

Women already receive a risk assessment throughout pregnancy and our guideline has been updated to include a risk assessment for "place of birth".

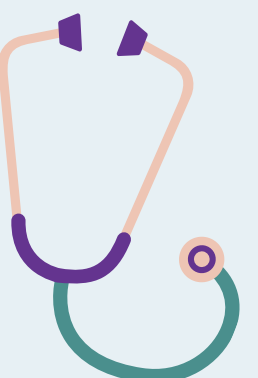


### Managing Complex Pregnancy

"There must be robust pathways in place for managing women with complex pregnancies."

#### Our plan locally

Women with complex pregnancies have a named consultant lead and we audit this regularly to ensure compliance. We are part of the Thames Valley Maternal Medicine Network and we are working with them and others to improve pathways and support for women.

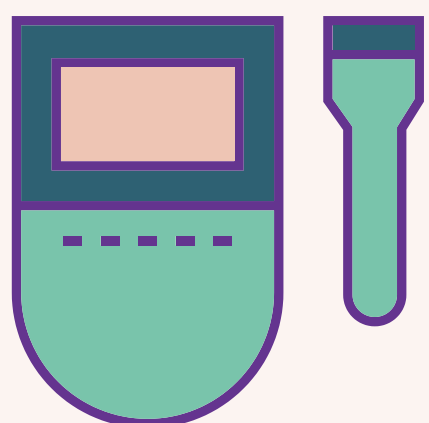


### Monitoring Fetal Wellbeing

"All maternity services must appoint a dedicated Lead Midwife and Lead Obstetrician both with demonstrated expertise to focus on and champion best practice in fetal monitoring."

#### Our plan locally

We have in place midwifery and obstetric leads for fetal monitoring. All clinical staff attend annual, mandatory fetal monitoring training. We have weekly reflective meetings to review fetal monitoring in practice. We use computerised equipment to support in our antenatal decision making. We are working towards achieving all the recommendations set out in the Saving Babies' Lives care bundle.

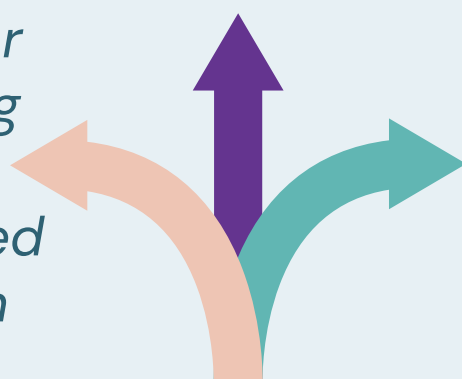


### Informed Consent

"All Trusts must ensure women have ready access to accurate information to enable their informed choice of intended place of birth and mode of birth, including maternal choice for caesarean delivery."

#### Our plan locally

We have a dedicated maternity website for women to read about our service, including access to all our guidelines. We are launching a new Frimley Health Personalised Care Plan app to support women further in their decision making.



Please contact our Maternity Voices Partnership if you have any questions or feedback

[www.frimleyandwexhammaternityvoices.org.uk](http://www.frimleyandwexhammaternityvoices.org.uk)